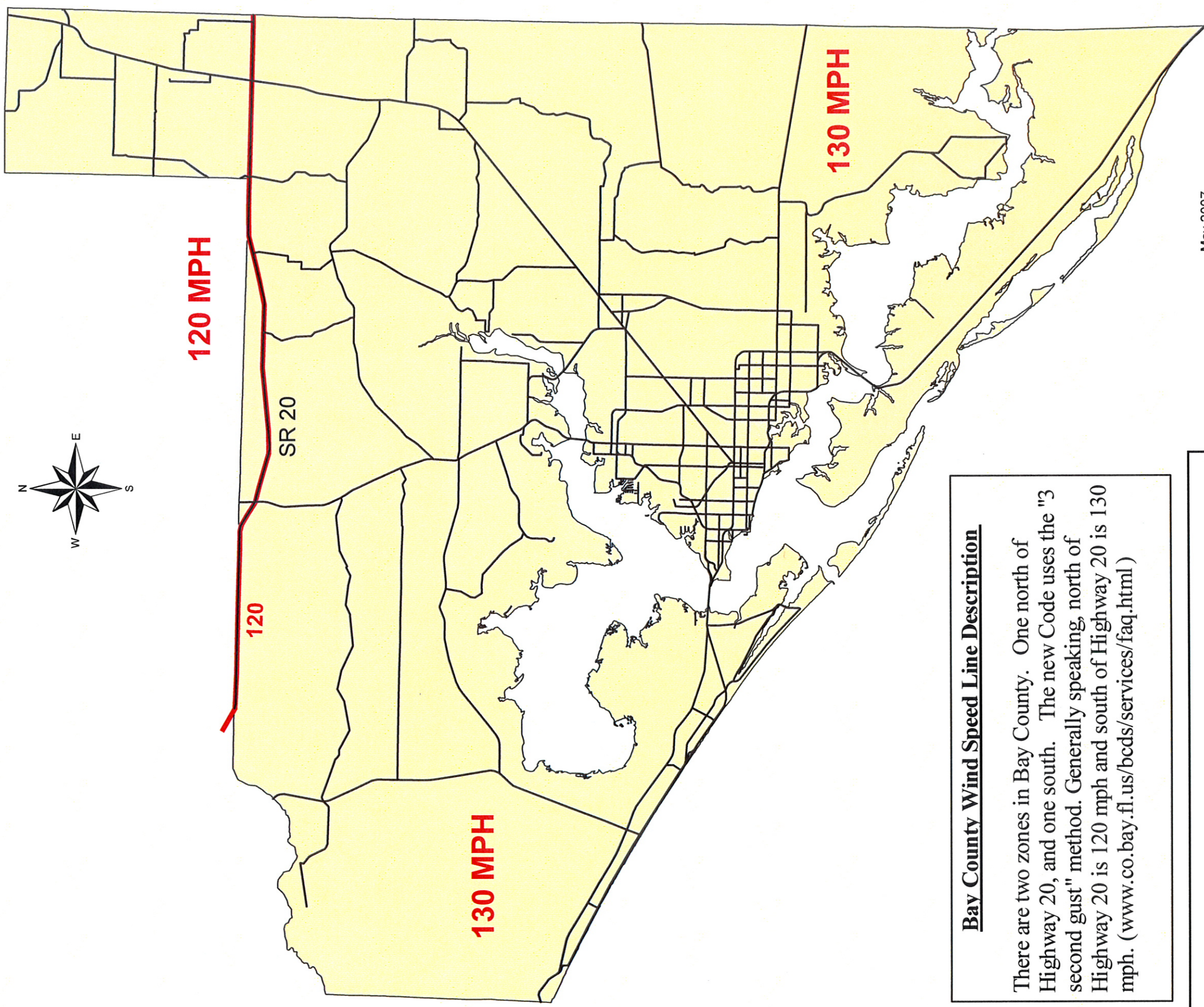




# Bay County Wind Speed Lines



## Bay County Wind Speed Line Description

There are two zones in Bay County. One north of Highway 20, and one south. The new Code uses the "3 second gust" method. Generally speaking, north of Highway 20 is 120 mph and south of Highway 20 is 130 mph. ([www.co.bay.fl.us/bcnds/services/faq.html](http://www.co.bay.fl.us/bcnds/services/faq.html))

## Bay County Wind Speed Lines

-  Bay County Wind Line
-  Major Roads
-  County Boundary

May 2007.

Source: Bay County Development Services Department,  
Builders Services Division,  
[www.co.bay.fl.us/bcnds/services/faq.html](http://www.co.bay.fl.us/bcnds/services/faq.html)

Base Layer Source: Florida Geographic Data Library

Prepared by the GeoPlan Center, University of Florida  
for the Florida Department of Community Affairs,  
Codes and Standards Division.

5 2.5 0 2.5 5 Miles